

DOCK-RAMP

ELEVATING DOCK

APPROVAL FORM AND DRAWINGS

Authorized Distributor

STANDARD

ELEVATING DOCK MODEL: _____

OR

LO-PROFILE SEMI-PORTABLE

ELEVATING DOCK MODEL: _____

Platform: Width ☐ 60" ☐ 72" ☐ 84" ☐ 96" Length ☐ 96" ☐ 108" ☐ 120" ☐ 144"

SPECIAL WIDTH (PLEASE INDICATE): _____ SPECIAL LENGTH (PLEASE INDICATE): _____

Standard Capacity: ☐ 4,000 lbs. ☐ 5,000 lbs. ☐ 6,000 lbs. ☐ 8,000 lbs. ☐ 10,000 lbs. ☐ 12,000 lbs.
☐ 15,000 lbs. ☐ 20,000 lbs. ☐ 25,000 lbs.Lowered Heights: ☐ 10" (4-6,000 lb capacity up to 96" Long) ☐ 14" (4-6,000 lb capacity 108" - 144" Long) ☐ 14" (All 8-12,000 lb capacity) ☐ 21" (All 15-20,000 lb capacity)

CUSTOM LOWERED HEIGHT (PLEASE INDICATE): _____

Lip 1: Width: ☐ 60" ☐ 72" ☐ 84" Length: ☐ 18" ☐ 24" ☐ 30" ☐ 36" ☐ Steel ☐ One Piece ☐ Split ☐ No Lip
(Bridge On Rolling End)Lip 2: Width: ☐ 60" ☐ 72" ☐ 84" Length: ☐ 18" ☐ 24" ☐ 30" ☐ 36" ☐ Steel ☐ One Piece ☐ Split ☐ No Lip
(Approach On Fixed End)

Electrical Requirements: (Voltage / Phase / Hertz)

☐ 208V /1PH/ 60HZ ☐ 220-240V /1PH/ 60HZ ☐ 200-208V /3PH/ 60HZ ☐ 220-240V /3PH/ 60HZ ☐ 115-120V /1PH/ 60HZ☐ 440-480V /3PH/ 60HZ ☐ 550-600V /3PH/ 60HZ ☐ 220V /1PH/ 50 HZ ☐ 380-415V /3PH/ 50HZPower Unit: ☐ 1 HP ☐ 3 HP ☐ 5 HP ☐ 7.5 HP ☐ 10 HP Paint: ☐ Blue ☐ Black ☐ Gray
(Remote On 12' Hose)

Special Notations: _____

General Options - Check Here After Options Reviewed ☐

Lift Safety Accessories

- ☐ Electric Toe Guards (Deck Style 2)
- ☐ Warning Bell
- ☐ Warning Horn
- ☐ Flashing Amber Beacon (Mounted On Power Unit)
- ☐ Mechanical Pop-Up Wheel Chock (Fixed End Only)
- ☐ Accordion Safety Skirting (External Mount, Requires Additional Pit Clearance(s)).
- ☐ Maintenance Stand

Pit

- ☐ Curb Angles

Lip Plate (See Notes)

Lip 1 Lip 2

- ☐ ☐ Spring Assisted¹
- ☐ ☐ Aluminum²
- ☐ ☐ Hydraulic 72" W x 24" L³

Note 1: Standard on models 8,000 lb and over, and/or one piece lips 24" long and over

Note 2: Available up to 10,000 lb models

Note 3: Available up to 12,000 lb models

Hydraulics

- ☐ 25' of Hydraulic Hose
- ☐ Return Line Oil Filter
- ☐ Oil Reservoir Immersion Heater
- ☐ Arctic Oil (Temp. -27° C / -18° F)
- ☐ Biodegradable Oil (Not Available With Immersion Heater)

Controls

- ☐ Up Travel Limit Switch
- ☐ Down Travel Limit Switch
- ☐ Additional NEMA4 Push Button Control
- ☐ Push Button w/Disconnect Weather Proof Box and Twist Lock Plug On 4' Cord (Mounted On Post At 'C' & 'D')
- ☐ E-Stop Per Push Button Control
- ☐ Two Position Key Lock Per Push Button Control
- ☐ 24VAC Control
- ☐ Manual Load Lowering Valve
- ☐ Longer Push Button Cord (25' Total)
- ☐ Coil Cord For Push Button (25' Total)
- ☐ Weather Resistant Power Unit Cover

Overhead Door Interlock

- ☐ Photo Switch: 110-220V, 1PH
- ☐ Photo Switch: 208-600V, 3PH

Paint And Finish

- ☐ Other Paint Color For Dock Lift (Specify Pantone / ICI Code _____)
- ☐ Rust Inhibiting Primer For Dock Lift
- ☐ Non-Skid Grit Surface For Deck
- ☐ Hot Dipped Galvanized;
☐ Deck & Frame ☐ Curb Angle

Application: (Consult Factory)

- ☐ 25,000 lbs Roll-over Capacity
- ☐ Interlock Swing Gates
- ☐ Side A
- ☐ Side C

MODEL: _____ QTY: _____ ORDER #: _____ DATE: _____

CUSTOMER: _____

STREET ADDRESS: _____

CITY: _____ STATE/PROVINCE: _____ ZIP / POSTAL: _____

PROJECT: _____ GENERAL CONTRACTOR: _____

ARCHITECT: _____ DEALER: _____

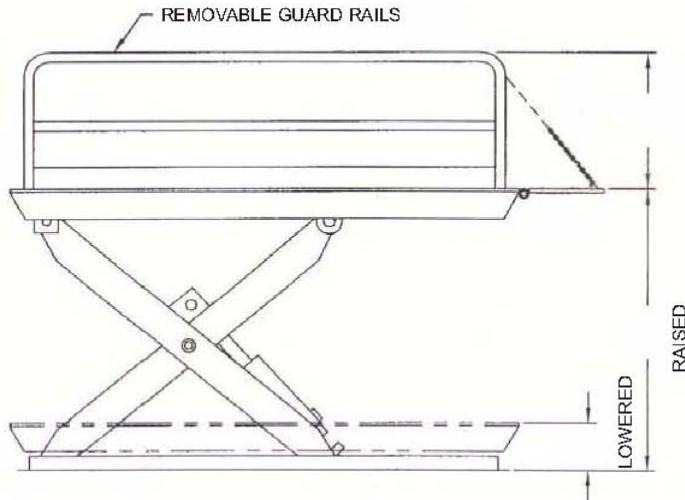
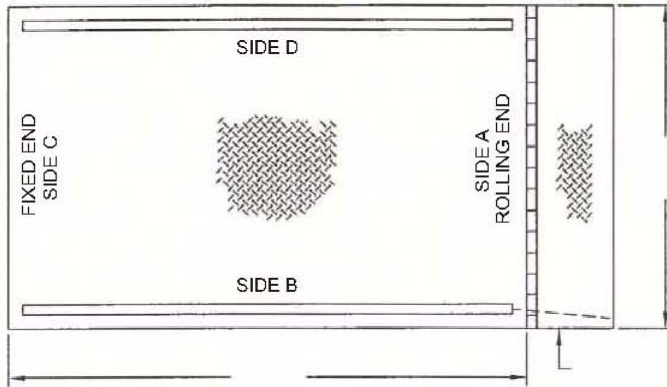
APPROVED BY: _____ APPROVAL DATE: _____

The following artist renderings & information supplied subject to change without notice or liability. Please refer to owners/installation manuals where applicable.

STANDARD CONFIGURATION

Lowered Height: + _____"
 Travel: + _____"
 Raised Height: = _____"
 Pit Width: _____"
 Pit Length: _____"
 Pit Depth: _____"

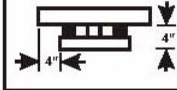
Note, if unit is pit mounted, vertical travel equals raised height.



Style 2



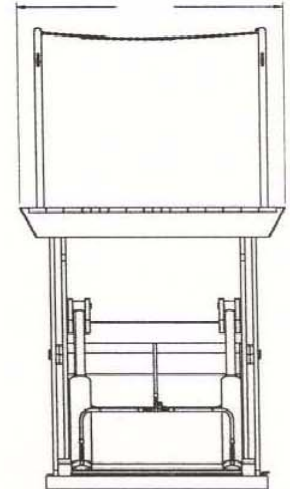
Toe Clearance
 Deck must be 8"
 wider and longer than
 frame



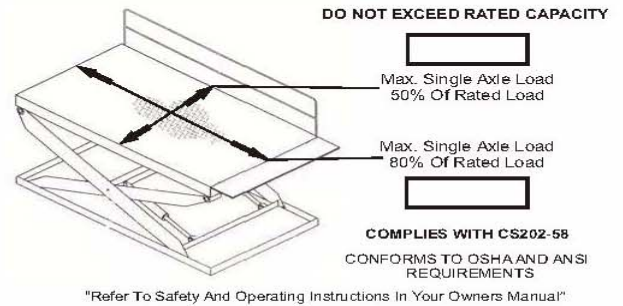
Style 3



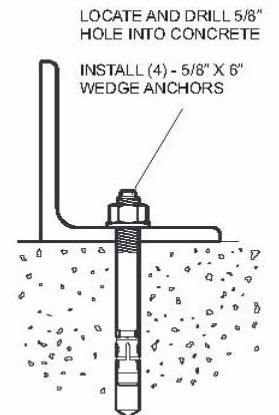
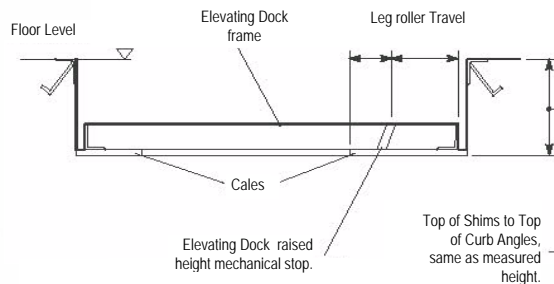
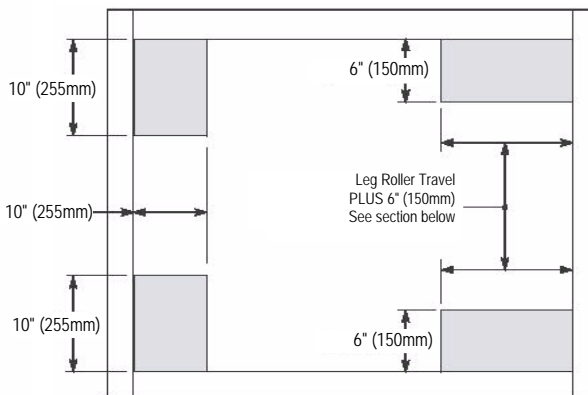
Tapered Toe Guard
 units with 12" or more
 lowered height, decks
 must be 8" wider and
 longer than frame



Raised Load Rating



INSTALLATION OVERVIEW



Please Return All Submittal Approvals

Stamped/Signed And Dated

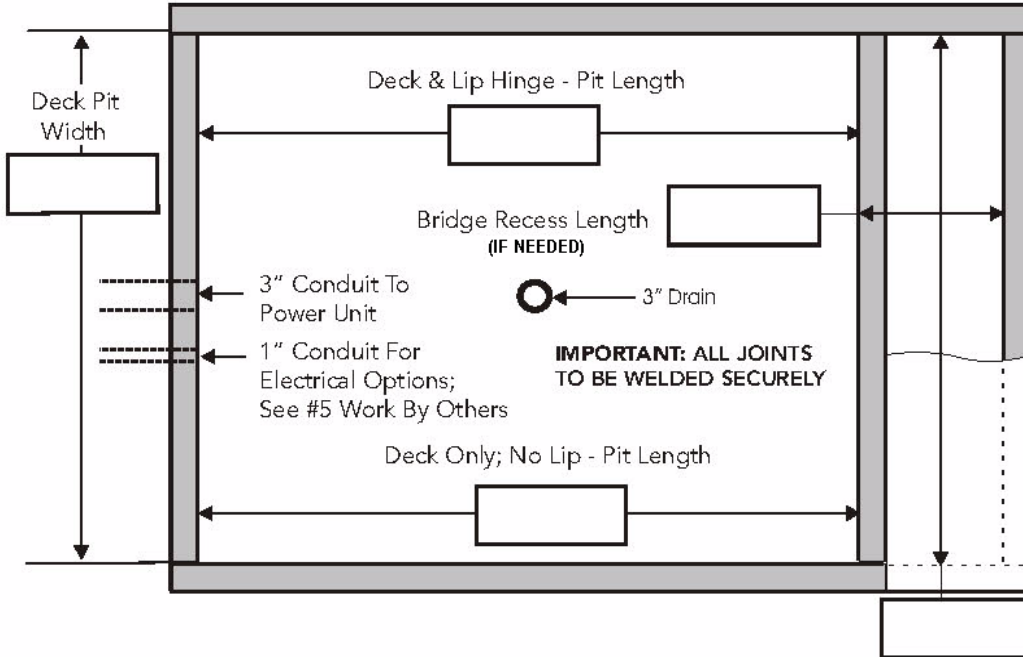
Initial

Date / /

PIT DETAIL

TOP VIEW

Platform & Lip Same Width



PIT DIMENSIONS

Width Requirements:

ADD 1" Per Side To Deck Width For Unit Clearance

Length Requirements:

ADD 1" Per Side To Deck Length For Unit Clearance

LIPS

ADD TO PIT DIMENSIONS ABOVE

Requires Additional 1" Pit Length For NON-SPRING ASSIST LIP

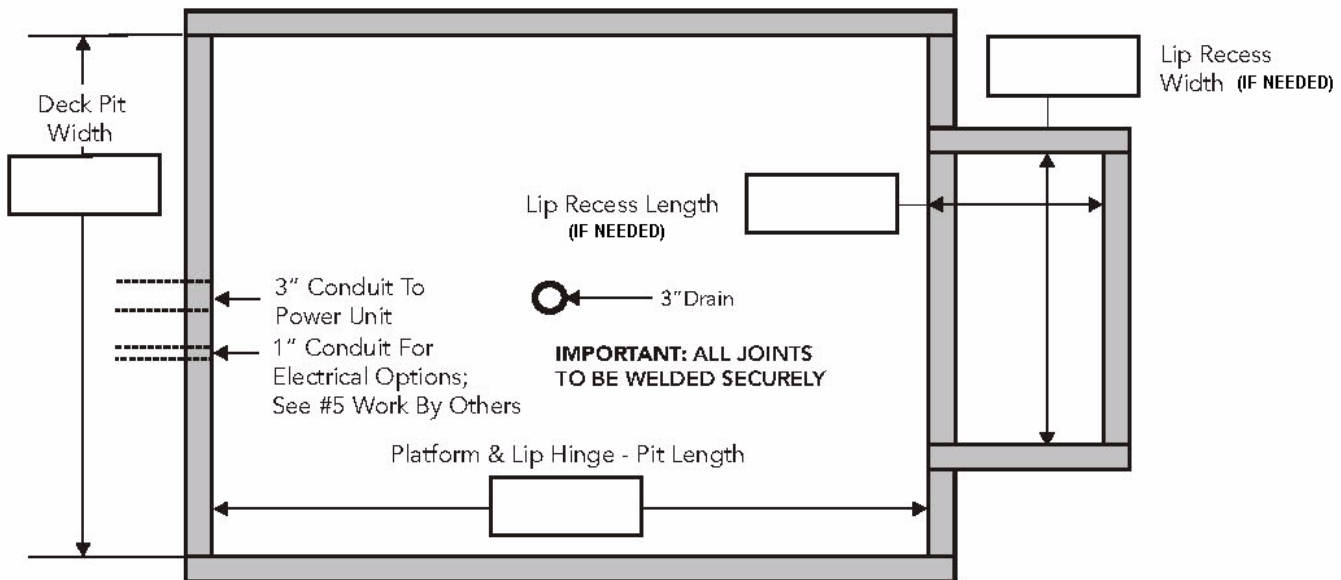
Requires Additional 2" Pit Length For SPRING ASSIST LIP

NOTE:

For Hydraulic Operated Lip, CONSULT DEALER.

TOP VIEW

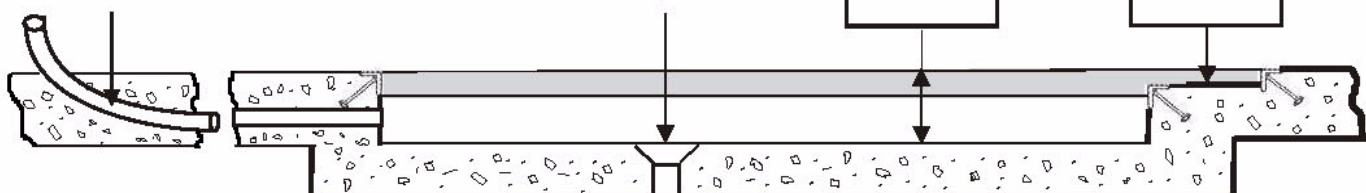
Platform Wider Than Lip



!! CRITICAL !!

SIDE VIEW

3" Conduit Must Have Minimum 14 1/2" Radius Bend



Please Return All Submittal Approvals

Stamped/Signed And Dated

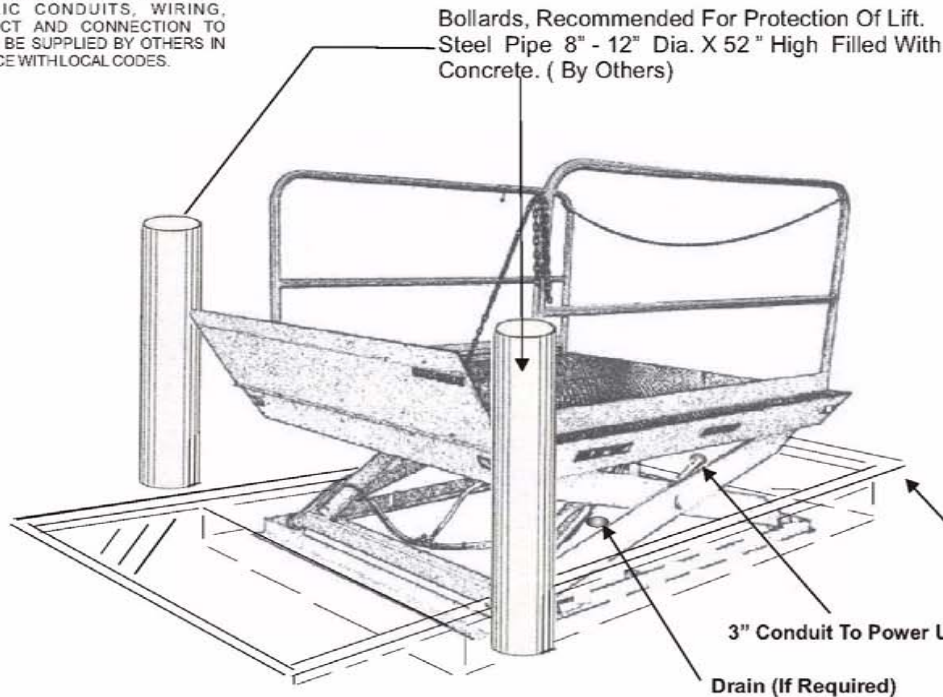
Initial

Date

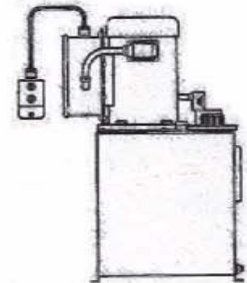
/ /

Arrangement Drawing (Responsibilities)

ELECTRICAL DETAILS - All INTERIOR AND EXTERIOR ELECTRICAL AND HYDRAULIC CONDUITS, WIRING, DISCONNECT AND CONNECTION TO POWER TO BE SUPPLIED BY OTHERS IN COMPLIANCE WITH LOCAL CODES.



Power Unit Mounted On Reservoir For Size Of Power Pak See Table Below. Unit Floor Mounted. NEMA 4 Control Station, Constant Pressure Type With 'Up' And 'Down' Buttons On 12'0" Straight Electrical Cord. Control Components Are Installed In NEMA 12 Rate Enclosure, Pre-wired And Dielectric Tested.



Power Unit Maximum Of 35'0" Away From Lift

STANDARD POWER PACK DIMENSION	3 HP	5 HP	7.5 HP	10 HP
Length	18"	25"	25"	25"
Width	15"	20"	20"	29"
Height	29"	36 1/2"	36 1/2"	31"
Shipping Weight	175 lb	355 lb	405 lb	460 lb

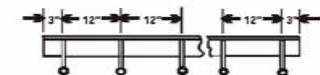
Note: 3 HP available for 4,000 - 6,000 lb capacity models only

Note: For Floor Mounted Installation (Not Shown), Concrete Pad To Be Minimum 6" Wider and 6" Longer Than Dock Lift, And Concrete Pad To Be 8" - 10" Thick With Embedded Rebar, By Others And In Compliance With Local Codes.



(1/4" MIN.)

CURB ANGLE ANCHOR LAYOUT



CONCRETE ANCHORS - NELSON STUDS, 1/2" DIA. 6" LONG, LOCATED AS SHOWN

WORK BY OTHERS

1. Reinforce Concrete To Suit Site Soil Requirements
2. One (1) Electric Disconnect For 3 HP to 10 HP Power Unit
3. All Construction Of Pit And Materials Shown (Bollards, Curb Angles, 3" Conduit To Pit, Drain Etc.)
4. One (1) 3" Conduit From Dock Lift Pit To Power Unit Location
Critical - 3" Conduit Must Have Minimum 14 1/2" Radius At Bends
5. One (1) 1" Minimum Conduit Required For Optional;
 - ☐ Electric Trip Bars
 - ☐ Up Travel Limit Switch
 - ☐ Down Travel Limit Switch
 - ☐ Push Button w/Disconnect Weather Proof Box and Twist Lock Plug On 4' Cord (Mounted On Post At 'C' & 'D')
6. Optional Hydraulic Lip Requires An Additional 3" Conduit

- i. Pull Optional Electrical Wiring, As Noted In #5 Work By Others, Thru 1" Conduit From Power Unit, Make Proper Connections
- ii. Pull Hydraulic Hose Thru 3" Conduit From Power Unit, Make Proper Connections
- iii. Shim Dock Lift As Required
Provide Concrete Anchor Bolts For Installing
- iv. Make Adjustments To Unit For Proper Operation
- v. Demonstrate Operation And Maintenance Of Dock Lift To Customer

SAFETY

To Meet OSHA**, ANSI Requirements And To Remove Some Legal/Insurance Issues That May Arise. It Is Required To Use At Minimum Wheel Chocks Anytime Loading Equipment Is Used At The Dock To Load/Unload Vehicles.

** Reference OSHA 1910.178 (k)(1) and OSHA 1910.178 (m)(7)

Please Return All Submittal Approvals

Stamped/Signed And Dated

Initial

Date

/ /